

To Accompany Bylaw No. 1974 of the Town of Smithers To Close Part of Road Dedicated on Plan 1646 Section 30 Township 4 Range 5 Coast District

Pursuant to Section 120 of the Land Title Act and Section 40 of the Community Charter.

BCGS 93L.075

SCALE:



The intended plot size of this plan is 864mm in width by 560mm in height (D size) when plotted at a scale of 1:800.

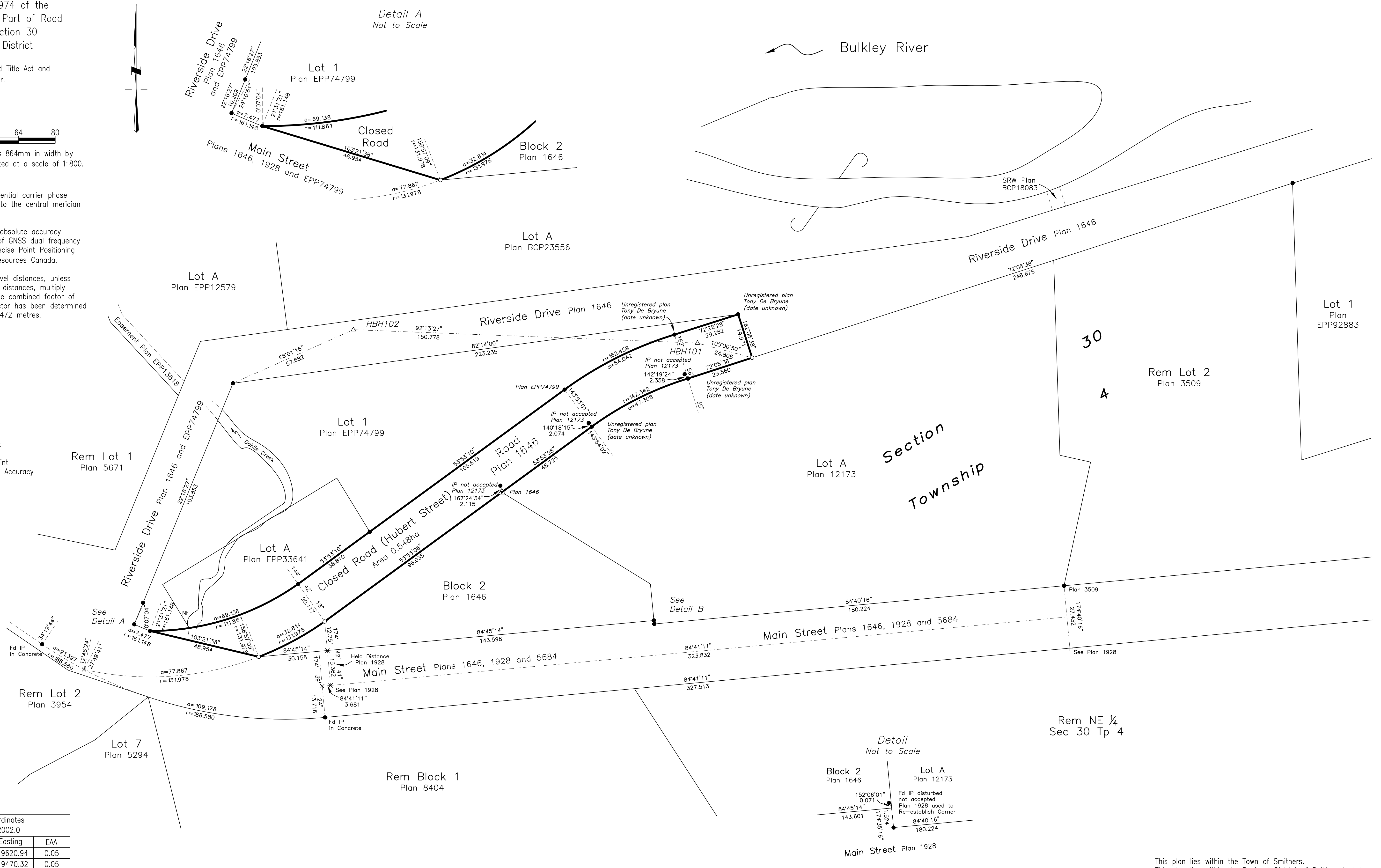
Grid bearings are derived from differential carrier phase GNSS observations and are referred to the central meridian of UTM Zone 9 North.

The UTM coordinates and estimated absolute accuracy achieved are derived from 8 hours of GNSS dual frequency observations processed using the Precise Point Positioning (PPP) service provided by Natural Resources Canada.

This plan shows horizontal ground level distances, unless otherwise specified. To compute grid distances, multiply ground level distances by the average combined factor of 0.999703. The average combined factor has been determined based on an ellipsoidal elevation of 472 metres.

LEGEND:

Found	Placed	Description
▲	△	Traverse Hub
●	○	Standard Iron Post
▲	○	Angle Iron
+		Unmonumented Point
EAA		Estimated Absolute Accuracy



UTM Zone 9 Coordinates NAD83 (CSRS) 2002.0			
Station	Northing	Easting	EAA
TH101	6071987.44	619620.94	0.05
TH102	6071993.29	619470.32	0.05