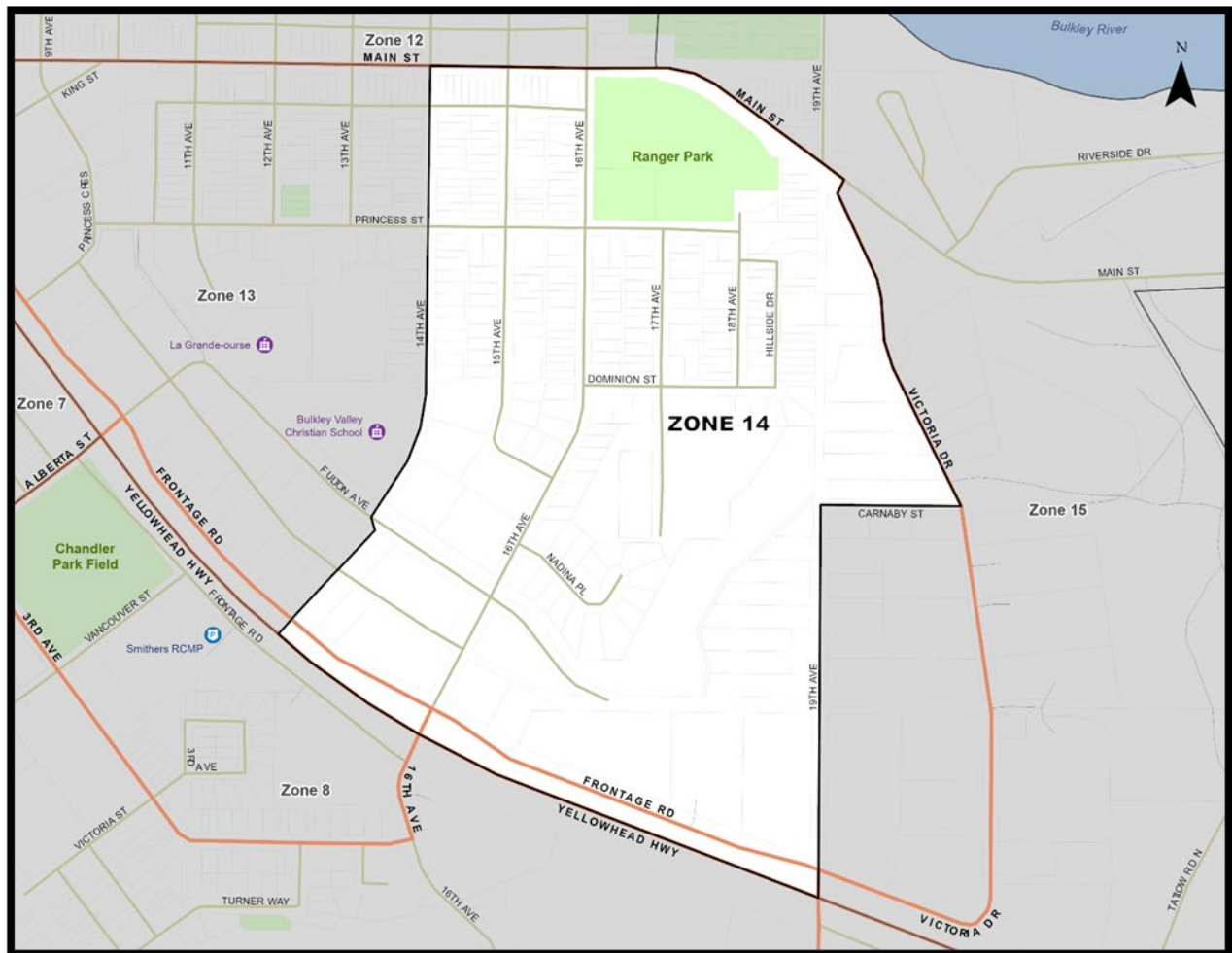


# Town of Smithers Neighborhood Emergency Preparedness Planning Program



## Evacuation Zone: 14

**MUSTER POINT:** Ranger Park or Bulkley Valley Christian School Field

- \* Muster points are to be used by those who require transportation out of the zone.
- \* Ensure that your family has a 72 hour emergency preparedness kit and each family member has a grab and go bag.
- \* In an emergency stay tuned to Radio, TV, Social Media and your Mass Notification System for more information.